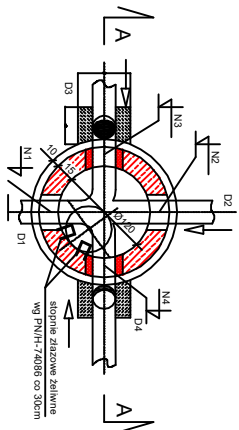
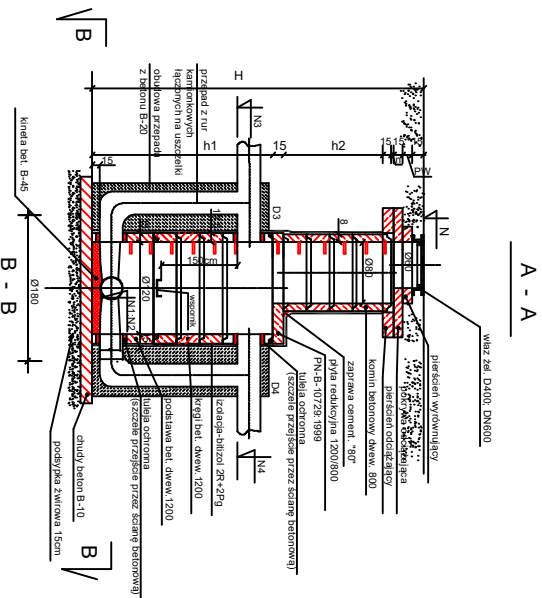
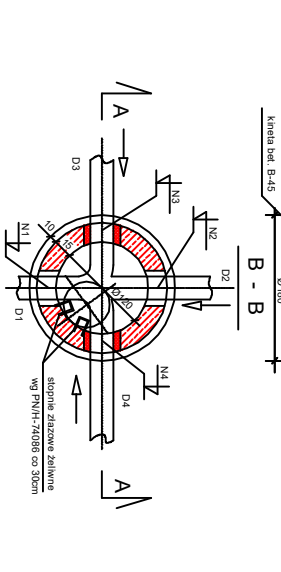
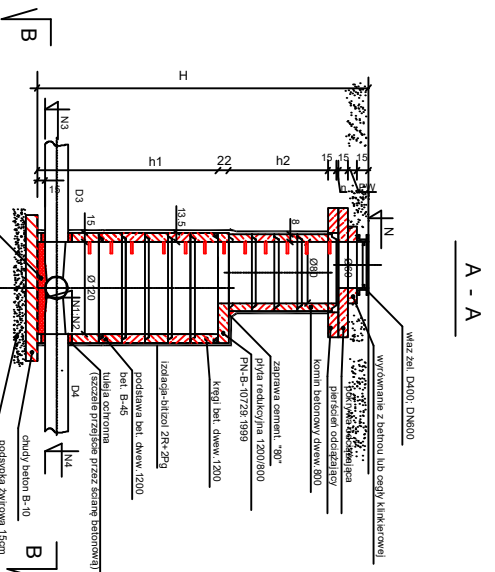
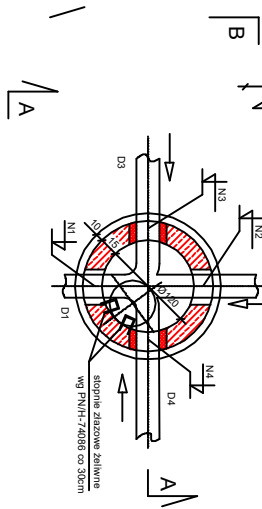
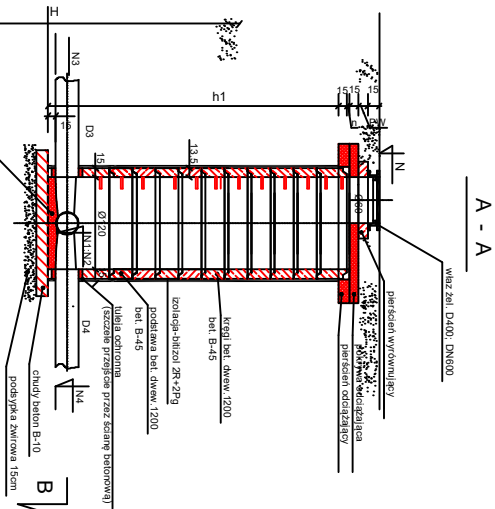
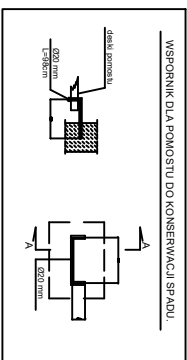


STUDZIENKI BETONOWE Ø1200

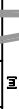


STUDZIENKI BETONOWE Ø1200



STUDZIENKI BETONOWE Ø1200

[illegible]

WYMIARY STUDIUM PRZELĄCZENIOWYCH Ø1200																								
NR. SCHEMATY STUDIUM	POLĄCZENI	BRENDENCE				RZĘCZNE										WYMIARY					KATEGORIE BIEGOWE			
		D1	D2	D3	D4	N	N ₁	N ₂	N ₃	N ₄	N ₅	H	n	1000/100	1000/100	1000/100	1000/100	1000/100	1000/100	1000/100				
1	2	3	4	5	6	7	8	9	10	11	12	13	14	15	16	17	18	19	20	21				
KST	D100	D180	-	-	156,03	154,99	154,96	-	-	1,35	1,94	0,00	1	-	-	-	1	1	1	1				
																								

NR	SCHEMATIC POLYMER STRUCTURE	SEQUENCE				EQUENCE				VINALITY				INHERITING											
		D1	D2	D3	D4	N	N ₁	N ₂	N ₃	n ₁	n ₂	n ₃	n ₄	POSSIBLE POLYMER STRUCTURE	POSSIBLE POLYMER STRUCTURE	POSSIBLE POLYMER STRUCTURE	POSSIBLE POLYMER STRUCTURE	POSSIBLE POLYMER STRUCTURE	POSSIBLE POLYMER STRUCTURE	POSSIBLE POLYMER STRUCTURE	POSSIBLE POLYMER STRUCTURE	POSSIBLE POLYMER STRUCTURE	POSSIBLE POLYMER STRUCTURE		
1		3	4	5	6	7	8	9	10	11	12	13	14	15	16	17	18	19	20	21	22	23	24		
KS4		D200	-	-	-	157.67	152.77	-	-	2.10	2.00	4.50	0.03	1	1	2	-	-	1	1	1	1	1		
KS5		D200	-	-	-	152.25	152.82	-	-	2.10	2.80	5.65	0.04	1	1	2	1	-	1	1	1	1	1		
KS6		D200	-	-	-	158.44	152.43	152.43	-	2.10	0.75	6.01	0.03	1	1	3	-	-	1	1	1	1	2		